

ICS NAV6 eNAVTEX App

Quick Start Guide

MAN03350

Issue 1.0, May 2013.

ICS Electronics Limited
 Unit V, Rudford Industrial Estate
 Ford, Arundel, West Sussex
 BN18 0BF
 United Kingdom
 Tel: +44 (0)1903 731101
 Fax: +44 (0)1903 731105
 E-Mail: sales@icselectronics.co.uk
support@icselectronics.co.uk
 Website: www.icselectronics.co.uk

Congratulations on purchasing this high quality ICS Electronics Ltd product. Please take the time to read this manual carefully as it contains some essential information regarding the operation and maintenance of the product.

We recommend that you regularly visit the ICS website www.icselectronics.co.uk for information on updates, the availability of software upgrades, further options and support. The support pages contain frequently asked questions about the NAV6 range that you may find useful. There is also a NAVTEX database providing a list of operational NAVTEX stations and their details.

The IMO and various national coastguards also operate informative websites that you may wish to visit; see www.icselectronics.co.uk/links.

The technical data, information and illustrations contained in this publication were to the best of our knowledge correct at the time of going to print. We reserve the right to change specifications, equipment, installation and maintenance instructions without notice as part of our policy of continuous product development and improvement. No part of this publication may be reproduced, stored in a retrieval system or transmitted in any form, electronic or otherwise without permission in writing from ICS Electronics Ltd. No liability can be accepted for any inaccuracies or omissions in the publication, although every care has been taken to make it as complete and accurate as possible.

Important Information

This application is not approved for use by SOLAS convention vessels within the Global Maritime Distress and Safety System (GMDSS). It is intended for use by leisure craft and other non-SOLAS vessels wishing to participate within GMDSS

Safety Warnings

This application is for use as an aid to sailors and should not lead to a reduction in the level of good seamanship required at all times. Reception of messages cannot always be guaranteed as this depends on local radio propagation.

Minimum System Requirements

The eNAVTEX App is designed to run on PCs running the following operating systems:

- Windows XP SP3
- Windows Vista
- Windows 7
- Windows 8 (desktop mode)

The minimum system requires are:

- | | |
|----------------|---|
| Windows XP SP3 | Pentium 500 MHz processor and 512 MB of RAM. |
| Windows Vista | 800 MHz processor and 512 MB of RAM. |
| Windows 7 | 1 GHz processor and 1 GB of RAM (32-bit) or 2 GB of RAM (64-bit). |
| Windows 8 | 1 GHz processor and 1 GB of RAM (32-bit) or 2 GB of RAM (64-bit). |

Installing the NAV6 eNAVTEX App

To install the eNAVTEX App:

Make sure you have the administrative access permissions for installing apps on your PC/ Laptop.

Place the eNAVTEX app CD in your pc or laptop CD drive.

The installer should auto-run, follow the on-screen instructions for installation.

The CD includes a quick start manual to help get the eNAVTEX App installed and working with an NAV6 eNAVTEX Receiver.

If the installer does not auto-run:

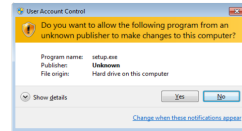
Click on "Computer" and find your CD/DVD drive.

Right mouse click and select "explore."

Click on the "Setup.exe" file

Follow the on-screen instructions for installation.

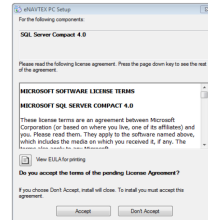
On a Windows 7 machine you may see a User Account Control pop up window when the installation runs the setup.exe program.



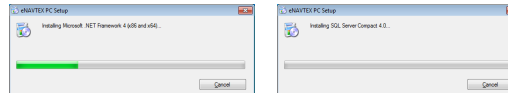
You must answer yes to install the eNAVTEX App as the program requires permission to install the application on your hard drive.

The eNAVTEX App requires the host PC to have Microsoft .NET Framework 4 and SQL Server Compact 4.0 installed. The setup.exe installer program will check your machine and if necessary offer to install these packages.

If Microsoft .NET Framework 4 and/or SQL Server Compact 4.0 needs to be installed, you will be prompted to accept the Microsoft licence agreements. You must read and accept the terms of these licence agreements to proceed with the installation.



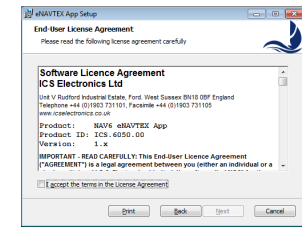
If necessary, the installer will now install Microsoft .NET Framework 4 and/or SQL Server Compact 4.0; this may take several minutes. During this time you will see one or more progress windows.



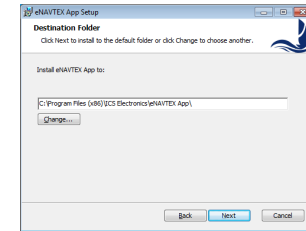
The installer is now ready to run the installation wizard to install the eNAVTEX App software.



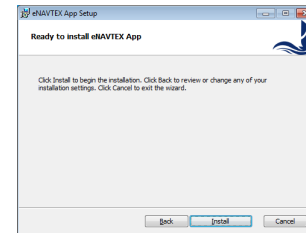
Click the next button to proceed with the installation. The eNAVTEX App software licence agreement will be displayed.



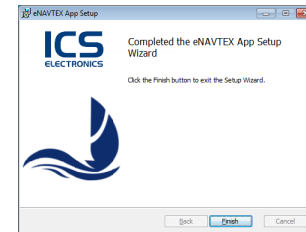
You can use the print button to print a copy for your reference; if you don't, there is a PDF copy on the installation CD. Accept the terms of the licence agreement by ticking the box "I accept the terms of the License Agreement" in order to proceed with the installation.



The Destination Folder page should be displayed. The eNAVTEX App program files will be installed in the destination folder. It is best to use the default folder shown unless there is good reason not to, e.g. the C: hard drive partition is nearly full. If you want to change the destination folder, you can click the Change button to browse to an alternative folder or edit the displayed path. Click the next button to proceed with the installation.



The installation is now ready to install the files on your machine. Click install to start copying the files.



The final page appears when the installation is complete. Click the Finish button to close the installer. The eNAVTEX App is now ready to run.

Before running the eNAVTEX App, it is a good idea to install your receiver and connect it to the PC/ Laptop. Instructions for this can be found in the application help and in the full manual located on the installation CD.

Starting the NAV6 eNAVTEX App

From the Windows Start menu, locate the eNAVTEX App and click to launch. The installation will put the eNAVTEX App icon in the eNAVTEX App folder under All Programs and also in the quick launch list.