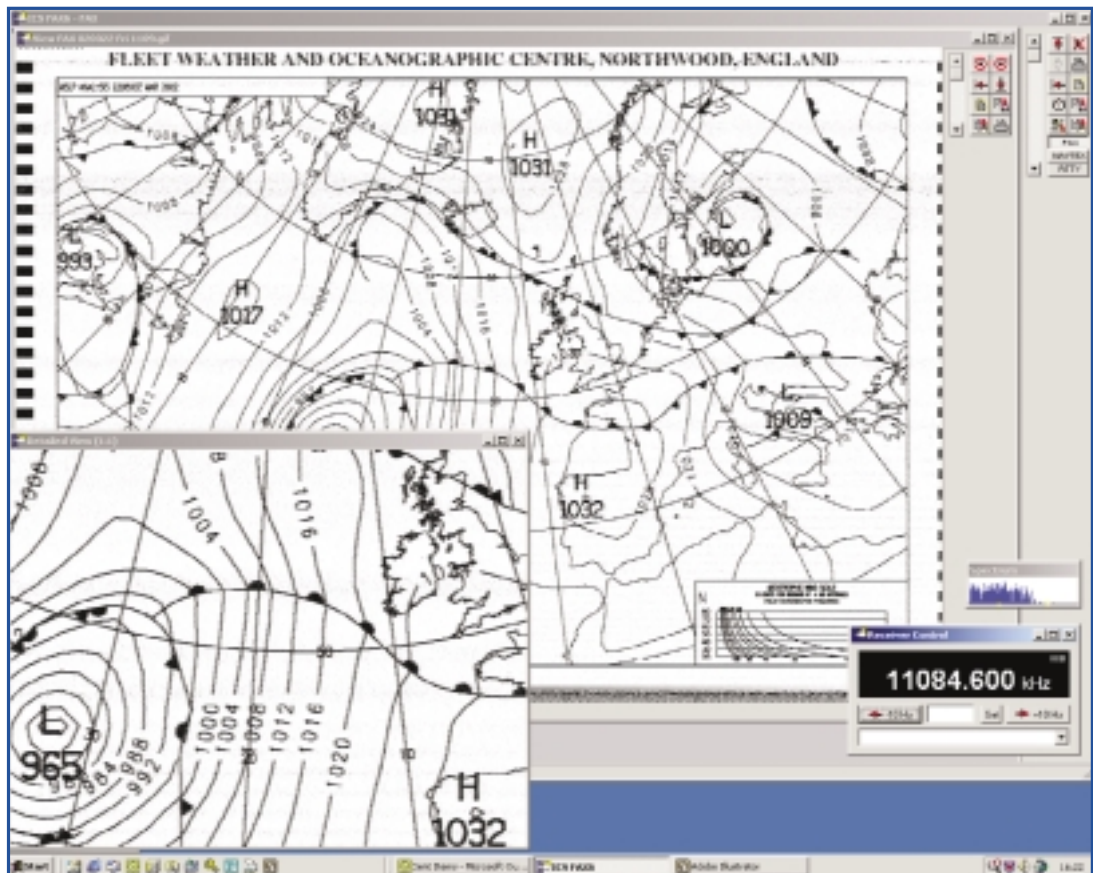


ICS Electronics is a leading World manufacturer of ship and coast station radio systems for GMDSS distress and safety communications

Windows“ Radio Weather Facsimile & Data Decoding

Since ocean navigation has been made easier by the introduction of GPS, the real skill in long distance sailing involves weather routing, based on the kind of information which ICS FAX6 can provide. This software continues to lead other programs in terms of versatility and simplicity of use. On-screen graphics resolution is clear and precise, sufficient to derive the last drop of detail from every map. FAX6 uses the sound card, which is embedded in most modern computers to decode weather and marine safety information - Facsimile, NAVTEX, FEC (MSI) and RTTY.



Extremely easy to use, FAX6 displays current and forecast weather information transmitted in Weather Fax, RTTY and NAVTEX formats from around the world.

Used in conjunction with any good quality short wave SSB radio receiver, the FAX6 offers reliable weather reports and forecasts virtually anywhere on earth. FAX6 software uses advanced Digital Signal Processing techniques to automatically track the weakest of signals and provide an on-screen display of high quality weather information.

Accurate tuning of the radio receiver could not be simpler using FAX6's 'spectrum' tuning window which automatically tracks and compensates for small tuning errors. The FAX6 can even remote control many popular makes of HF radio receiver. FAX6's automatic reception scheduler allows fully automated operation across a wide range of radio frequencies and message types over a 24 hour period.

FEATURES

- ▶ Innovative Windows™ 32bit software
- ▶ Weather Facsimile, NAVTEX - MSI RTTY 'Radio Teletype' decoding
- ▶ Time scheduler for automatic un-attended reception of weather data
- ▶ Operates with most good quality HF SSB receivers
- ▶ Remote frequency control of selected receivers
- ▶ On-screen tuning indicator with automatic signal tracking
- ▶ Frequency listing of Worldwide weather facsimile stations

ICS FAX6 Weather Facsimile Software



ICS FAX6

SOFTWARE FEATURES INCLUDE:

- ▶ On-screen tuning indicator for precise receiver tuning
- ▶ Automatic signal tracking
- ▶ Automatic IOC and LPM detection
- ▶ Images can be saved as Window .BMP or in .GIF formats
- ▶ Time scheduler for automatic un-attended reception
- ▶ Image Scroll, Zoom, Save and Print

Weather Facsimile transmissions are made by many stations around the world and are receivable over very long distances. They are made simultaneously on several frequencies to improve reliability of coverage. Typically, new weather maps are transmitted at 6 hour intervals, with forecast maps for each of the next five days sent daily. Sea state maps, sea surface temperature maps, maps of ocean currents, ice limits etc. extend the usefulness of the information provided well beyond simple weather forecasting.

NAVTEX transmissions are made every 4 hours on 518 kHz and 490 kHz with a nominal range of 200-300 nautical miles, each station having a different 10 minute time slot. 518 kHz weather forecasts are in English. Navigation warnings such as lights extinguished, new wrecks, or satellite navigation system off-air warnings etc. are also sent. Gale warnings and search and rescue information may be transmitted at anytime. The 490 kHz NAVTEX service offers detailed national language weather forecasts and useful small craft safety information.

RTTY can provide text weather broadcasts when sailing outside NAVTEX coverage areas.

A definitive source of information regarding transmitting stations, with their schedules and frequencies, is the 'UK Admiralty List of Radio Signals, Volume 3'.

Available from:

FAX6 Radio Receiver requirements

Use a good quality short wave SSB radio receiver or a transceiver, with selectable USB/LSB and a digital tuning display to an accuracy of 100Hz or better. The receiver should tune across a range of 100 kHz to 30 Mhz or more.

Audio Output connection - line (out), (tape recorder) or external loudspeaker socket. Most 'headphone' jack sockets are suitable, but an adaptor is sometimes required.

Optionally - To control the receiver functions from within ICS FAX6, the receiver should have an RS-232 remote control port or a interface type that is supported by FAX6.

As with most products, the more you pay for a radio receiver, the better the results. A good quality radio receiver will also allow reception of spoken forecasts, time broadcasts, long distance broadcasting services etc.

For good performance an outside antenna is essential. It will pass a strong signal to your receiver and provide optimum resolution and clarity of received data.

FAX6 supports remote frequency control via RS-232 / PC serial port connection of the following radio receivers;

Lowe HF150*. Icom PCR 1000, Icom CI-V* interfaced receivers. Icom M710 Marine transceiver*, JRC NRD, Quadrad QDR-1, QDR-2000, Ten-Tec RX320
* manufacturer's interface cable option required

The FAX6 package includes a receiver audio connecting lead and software supplied on PC CD ROM.

ICS FAX6 minimum PC Specification:-

Processor: Pentium, 166 MHz

Memory: 32 Mb RAM

Soundcard: Windows supported soundcard with a free audio input socket, Mic or line in.

Operating System: Windows 95 or later

Disk Drives: CD ROM reader, Hard Disk Drive with 10Mb + free space

Optionally: Printer port & printer; 1 free serial COM port (can use a USB to serial port converter) for remote frequency control of compatible radio receivers.

ICS Electronics has a policy of continuous product improvement and reserve the right to vary in detail from the specifications contained in this brochure.

FAX6 Issue 1 Rev A 21/03/2002 © 02 ICS Electronics Ltd

ICS Electronics Ltd,

Unit V, Rudford Industrial Estate, Ford, Arundel, West Sussex BN18 0BD, England.

Telephone: +44 (0) 1903 731101 Facsimile: +44 (0) 1903 731105

Email: sales@icselectronics.co.uk Web Site: www.icselectronics.co.uk